





# THE NATURE OF BELIEVING

## THE NATURE OF BELIEVING

It's in our nature,  
to hope,  
dream  
believe

That the shirt is lucky  
the boots are unstoppable  
that 2014  
will be our year

We'll do anything  
(literally, anything)  
to make that happen

We'll perform the rituals  
traditions and superstitions

No matter how irrational  
no matter how absurd

Because believing  
is what makes them work

Believing makes us stronger  
wills the ball across the line  
starts every comeback  
and makes the underdog  
triumph over the rest

Believing turns breakaways  
and shots and penalties  
into knee slides and songs  
and maybe  
(just maybe)  
a star

This is the Nature of Believing

### ■ FOOTWEAR

### ■ BADGES / EMBLEMS

### ■ MATCHDAY SHIRTS

|                        |    |
|------------------------|----|
| Power ACTV LS Shirt    | 8  |
| Speed LS Shirt         | 10 |
| Speed SS Shirt         | 12 |
| Diagonal LS Shirt      | 14 |
| Hooped LS Shirt        | 16 |
| Striped LS Shirt       | 18 |
| PowerCat 3.12 LS Shirt | 20 |
| PowerCat 5.12 LS Shirt | 22 |
| Team LS Shirt          | 24 |
| Team Shirt             | 26 |

### ■ MATCHDAY SHORTS

|                      |    |
|----------------------|----|
| Statement Shorts     | 28 |
| PowerCat 5.12 Shorts | 30 |
| Vellize Shorts       | 31 |

### ■ MATCHDAY SOCKS

|                     |    |
|---------------------|----|
| Statement Socks     | 32 |
| Hooped Socks        | 34 |
| PUMA Football Socks | 35 |
| PowerCat Socks      | 36 |
| Team Socks          | 37 |

### ■ GOALKEEPING

|                          |    |
|--------------------------|----|
| Statement GK Shirt       | 38 |
| GK Shirt                 | 40 |
| GK Shorts                | 42 |
| PUMA Football Socks – GK | 42 |
| GK Pants                 | 43 |
| Foundation GK Shorts     | 43 |

### ■ BODYWEAR

|                        |    |
|------------------------|----|
| Core SS Tee Round Neck | 44 |
| Core LS Tee Round Neck | 46 |
| Core LS Tee Mock Neck  | 47 |
| Core SL Tee Round Neck | 48 |

|            |    |
|------------|----|
| Core Long  | 48 |
| Core Short | 49 |

### ■ TRAINING

|                            |    |
|----------------------------|----|
| Elite Training             | 50 |
| Pro Training               | 54 |
| Spirit Team Training Tops  | 60 |
| Spirit Team Training Pants | 69 |

### ■ EQUIPMENT

|             |    |
|-------------|----|
| Bags        | 72 |
| Balls       | 76 |
| Bibs        | 80 |
| Accessories | 80 |

### ■ INFORMATION

|                    |    |
|--------------------|----|
| Sale               | 82 |
| Order Form         | 83 |
| Product Technology | 85 |
| Size Guide         | 85 |



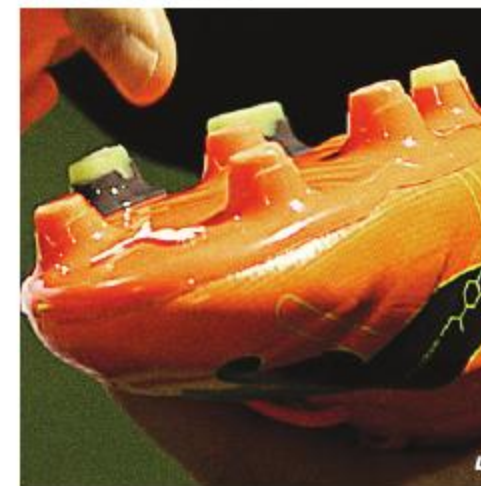
**1. ADAPTALITE.** A unique upper material that allows the foot to bend like a bare foot for increased kicking power.



**2. G.S.F. (GRADUAL STABILITY FRAME).** The G.S.F. outsole technology works as a spring, delivering gradual stability from the heel to the forefoot, enabling the foot to bend as much as possible, similar to a barefoot kick motion.



**3. ACCUFOAM.** Foam inserts into the vamp, evening out the pressure distribution across the kicking surface for increased accuracy.



**4. STUD CONFIGURATION.** Bladed = better ground penetration for more stability. Rounded = better rotation for manoeuvrability.





**1. CAGE.** The internal midfoot EverFit Cage wraps the foot to provide medial and lateral stability.



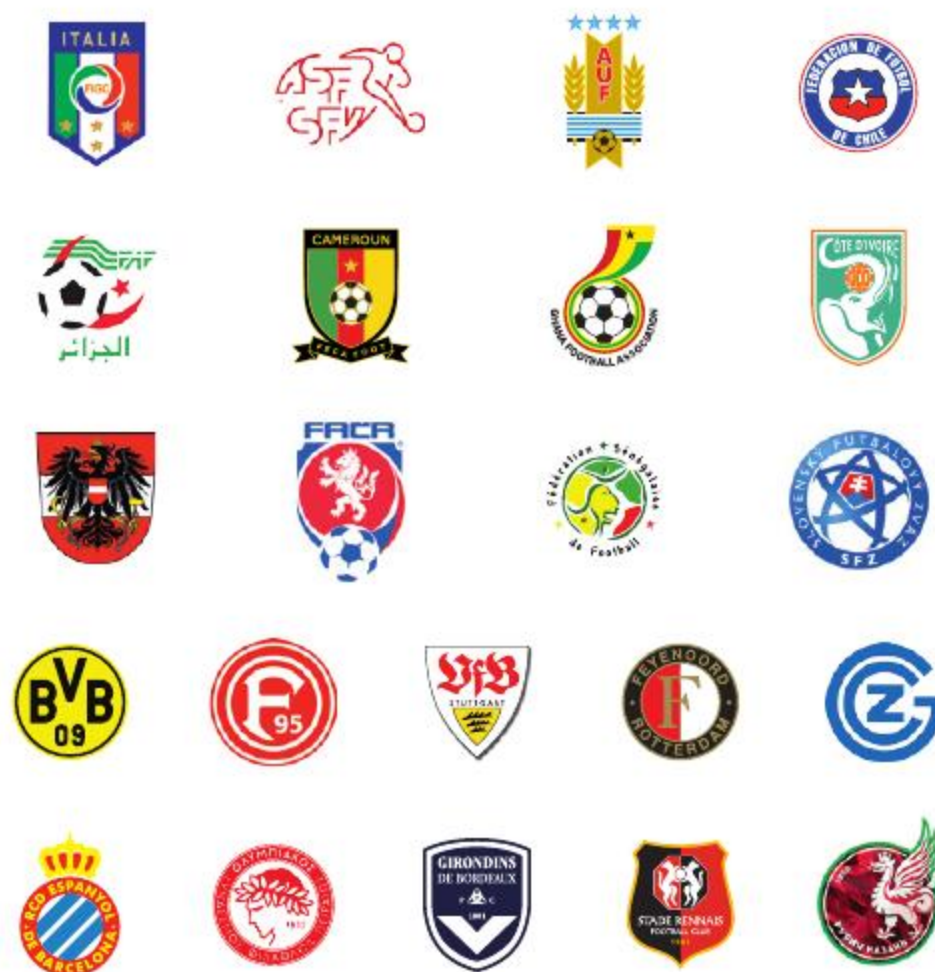
**2. PLATE.** The SpeedTrack Spine improves reactivity and torsion ability for biomechanically sound performance. DuoFlex in the forefoot provides fluidity.



**3. UPPER.** Super soft and light microfiber upper with 3D Griptex transparent print for better grip in wet conditions.



**4. STUDS.** The Pebax outsole is configured with conical studs for optimized ground penetration and maneuverability.





NEW

## POWER ACTV LS SHIRT 701908

Sergio Agüero is wearing the new POWER ACTV shirt with unique performance enhancing ACTV technology.

- 3 PUMA Cat brandings, heat transfer application
- Recycled Polyester/Elastane shell fabric
- PUMA ACTV technology applied to garment inner
- powerCELL technology

### MENS

S - XXL £55.00



PUMA RED-WHITE  
701908-01



WHITE-BLACK  
701908-04



PUMA ROYAL-WHITE  
701908-02

ATHLETIC TAPING  
+  
COMPRESSION  
=  
ENHANCED PERFORMANCE



Elegant traditional style collar with button down detail

ACTV Silicon Print Technology provides support in key areas of the body to maximise muscle performance and reduce fatigue

Official PUMA 2014 font available for names and numbers



POWER ACTV | 





NEW

## SPEED LS SHIRT 701909

Radamel Falcao mixes tradition and innovative construction with the contrast sleeve SPEED Shirt.

- 3 PUMA Cat brandings, heat transfer application
- Polyester warp knit mesh panel side inserts
- Polyester double knit Pique shell fabric
- dryCELL technology

### MENS

S - XXXL **£20.00**

### JUNIOR

24/26, 26/28, 30/32 **£15.00**

32/34 **£18.00** (VAT)



PUMA ROYAL-WHITE  
701909-02



POWER GREEN-WHITE  
701909-05



TEAM YELLOW-BLACK  
701909-07



TEAM VIOLET-WHITE  
701909-10



WHITE-PUMA RED  
701909-12



WHITE-PUMA ROYAL  
701909-13



TEAM PEARL BLUE-BLACK  
701909-51



PUMA RED-WHITE  
701909-01

Available in core team colours. Also suited to indoor or 5-a-side use

Heat applied PUMA Cat branding gives a contemporary lightweight look and feel

Short sleeve version provides an alternative look and feel to players seeking a different fit to the traditional long sleeve shirt

NEW

## SPEED SS SHIRT 701906

Mario Balotelli combines tradition and innovative construction with the contrast short sleeve SPEED Shirt.

- 3 PUMA Cat brandings
- Polyester double knit Pique shell fabric
- Polyester warp knit mesh panel side inserts
- dryCELL technology

### MENS

S - XXXL **£18.00**

### JUNIOR

24/26, 26/28, 30/32 **£14.00**  
32/34 **£17.00** (VAT)



PUMA RED-WHITE  
701906-01



PUMA ROYAL-WHITE  
701906-02



WHITE-PUMA RED  
701906-12



WHITE-PUMA ROYAL  
701906-13



Available in core team colours, ideally suited as an away strip alternative

Bold sash design makes an impactful style statement

Traditional V neck construction improves player comfort and reduces pressure

## DIAGONAL LS SHIRT 701769

Yaya Touré is making a dynamic style statement in the DIAGONAL team separates shirt with a striking sash graphic.

- Embroidered PUMA Cat on right chest and left sleeve
- Mesh on sides of shirt for breathability. Ribbed sleeve cuff for secure fit

### MENS

S - XXXL **£28.00**

### JUNIOR

24/26, 26/28, 30/32 **£22.00**

32/34 **£26.00** (VAT)



WHITE-NEW NAVY-TEAM  
PEARL BLUE **701769-01**



WHITE-BLACK-TEAM YELLOW  
**701769-03**



WHITE-BLACK-PUMA RED  
**701769-02**



WHITE-BLACK-BEETROOT PURPLE  
**701769-26**



Cat branding is embroidered on the right shoulder giving a modern twist to a classic looking shirt

Bold hooped graphic makes a dramatic on-pitch statement in core team colours

Traditional round neck construction with an additional bound edge to improve durability

## HOOPED LS SHIRT 701754

Nemanja Vidić wears the HOOPED team separates shirt in strong team colours with a very modern look and feel.

- Embroidered PUMA Cat on right shoulder
- Double-bound collar for fit
- 100% Polyester
- dryCELL technology

### MENS

S - XXXL **£26.00**

### JUNIOR

24/26, 26/28, 30/32 **£20.00**

32/34 **£24.00** (VAT)



PUMA RED-WHITE  
701754-01



TEAM GREEN-WHITE  
701754-03



RED-BLACK  
701754-04



PUMA ROYAL-WHITE  
701754-02





Round neck construction eases player comfort and provides a traditional look and feel

Embroidered PUMA Cat branding on right shoulder and both sleeves

Classic bold stripe design in traditional team colours

## STRIPED LS SHIRT 701276

Santi Cazorla wears the STRIPED long sleeve shirt for a supremely classic look.

- Mesh on back
- Rib cuff
- dryCELL technology on back
- 100% Polyester with a wicking finish

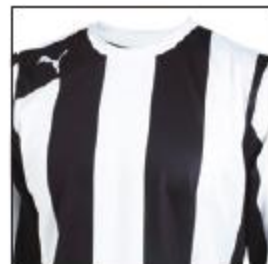
### MENS

S - XXXL **£22.00**

### JUNIOR

24/26, 26/28, 30/32 **£16.00**

32/34 **£19.00** [VAT]



PUMA RED-WHITE  
701276-01



BLACK-WHITE  
701276-03



TEAM YELLOW-BLACK  
701276-07



PUMA ROYAL-BLACK  
701276-27



PUMA RED-BLACK  
701276-14







## POWERCAT 3.12 LS SHIRT 701262

Marco Reus wears the POWERCAT 3.12 team separates shirt with contrast chest detail.

- One-piece underarm mesh for breathability and advanced movement
- USP dryCELL technology on back of shirt for comfort
- Contrast neck binding, 100% Polyester

### MENS

S - XXXL **£24.00**

### JUNIOR

24/26, 26/28, 30/32 **£18.00**

32/34 **£22.00** [VAT]



PUMA RED-WHITE  
701262-01



WHITE-BLACK  
701262-04



TEAM YELLOW-BLACK  
701262-07



PUMA ROYAL-WHITE  
701262-02



Embroidered Cat branding on contrast shoulder panel

Traditional round neck construction with additional binding improves durability

Mesh panel inserts under arms improves player comfort and freedom of movement

## POWERCAT 5.12 LS SHIRT 701261

Mikel Arteta wears the subtle but sophisticated POWERCAT 5.12 shirt with improved breathability.

- Double-bound collar, rib cuff, mesh on sides
- dryCELL technology on back
- 100% Polyester with a wicking finish and rib hem

### MENS

S - XXXL **£17.00**

### JUNIOR

24/26, 26/28, 30/32 **£13.00**

32/34 **£16.00** (VAT)



TEAM GREEN-WHITE  
701261-05



TEAM YELLOW-BLACK  
701261-07



TEAM ORANGE-BLACK  
701261-08



WHITE-PUMA RED  
701261-12



WHITE-PUMA ROYAL  
701261-13



PUMA RED-BLACK  
701261-14



PUMA ROYAL-WHITE  
701261-02





## TEAM LS SHIRT 701273

Olivier Giroud wears the TEAM long sleeved shirt with simplified styling and unexpected detail.

- Embroidered PUMA Cat on right chest
- Mesh back
- Rib cuff
- 100% Polyester with a wicking finish

### MENS

S - XXXL **£15.00**

### JUNIOR

24/26, 26/28, 30/32 **£11.00**

32/34 **£13.00** (VAT)



PUMA RED-WHITE  
701273-01



BLACK-WHITE  
701273-03



WHITE-BLACK  
701273-04



TEAM BURGUNDY-WHITE  
701273-09



TEAM VIOLET-WHITE  
701273-10



TEAM YELLOW-PUMA ROYAL  
701273-28



PUMA ROYAL-WHITE  
701273-02





## TEAM SHIRT 701269

Adam Lallana wears the short sleeve version of the TEAM shirt with contrast sleeve detail.

- Embroidered PUMA Cat on right chest
- Mesh back
- 100% Polyester with a wicking finish

### MENS

S - XXXL **£14.00**

### JUNIOR

24/26, 26/28, 30/32 **£10.00**

32/34 **£12.00** (VAT)



PUMA RED-WHITE  
701269-01



PUMA ROYAL-WHITE  
701269-02



WHITE-BLACK  
701269-04



NEW

## STATEMENT SHORTS W/O INNERS 701912

PUMA's Separates range offers the athlete the very best performance fabrics and innovation, no matter what your level.

- PUMA Cat branding, heat transfer application
- Recycled Polyester circular knit, double knit Pique shell fabric, Polyester circular knit mesh gusset and back yoke. Elasticated waistband with drawcord
- dryCELL technology

### MENS

S - XXXL £20.00



PUMA RED-WHITE  
701912-01



PUMA ROYAL-WHITE  
701912-02



WHITE-BLACK  
701912-04



BLACK-WHITE  
701912-03

STATEMENT |

DRY

CELL





WHITE-PUMA ROYAL  
701265-13



PUMA RED-WHITE  
701265-01



PUMA ROYAL-WHITE  
701265-02



BLACK-WHITE  
701265-03



WHITE-BLACK  
701265-04



TEAM YELLOW-BLACK  
701265-07



TEAM ORANGE-BLACK  
701265-08



WHITE-PUMA RED  
701265-12

## POWERCAT 5.12 SHORTS W/O INNER SLIP 701265

- Traditional short with contrast stripe detail down both legs
- Core colours co-ordinate with all team separates, shirts and socks
- Elasticated waist with drawcord for comfort and a secure fit
- Embroidered PUMA Cat on left leg
- dryCELL technology on back
- 100% Polyester with a wicking finish

### MENS

S - XXXL **£12.00**

### JUNIOR

24, 26, 28 **£9.00**

30 **£11.00** (VAT)

## VELIZE SHORTS W/O INNER SLIP 701945

- Classic football short engineered for durability and comfort
- Elasticated waist with drawcord for comfort and a secure fit
- Embroidered PUMA Cat on left leg
- Circular knitted
- 100% Polyester with a wicking finish

### MENS

S - XXXL **£10.00**

### JUNIOR

24, 26, 28 **£7.00**

30 **£8.00** (VAT)



PUMA ROYAL  
701945-02



BLACK  
701945-03



WHITE  
701945-04



POWER GREEN  
701945-05



PUMA RED  
701945-01



NEW NAVY  
701945-06



TEAM YELLOW-BLACK  
701945-07



TEAM ORANGE  
701945-08



TEAM VIOLET  
701945-10



TEAM YELLOW-ROYAL  
701945-28





NEW

## STATEMENT SOCKS 701915

PUMA's Separates range offers the athlete the very best performance fabrics and innovation, no matter what your level.

- PUMA Cat branding
- Double-layered fold over welt
- Cotton touch engineered footbed for comfort
- Ankle brace for support

### SIZES

12 - 2 **£7.00**

2.5 - 5.5 **£8.00**

6 - 8.5, 9 - 11 **£10.00**



PUMA RED-WHITE  
701915-01



PUMA ROYAL-WHITE  
701915-02



BLACK-WHITE  
701915-03



WHITE-BLACK  
701915-04



Statement sock with knitted-in contrasting graphic and PUMA Cat detail

Soft cotton footbed improves in-boot comfort and provides a secure fit and feel

STATEMENT 





**YELLOW/BLACK**  
771851-07



**RED/WHITE**  
771851-01



**BLACK/WHITE**  
771851-03



**GREEN/WHITE**  
771851-05



**ROYAL WHITE**  
771851-06



**RED/BLACK**  
771851-14

NEW

## HOOPED SOCKS 771851

- Knitted PUMA Cat logo on front
- Cotton instep
- Ankle flex insert for improved comfort

### SIZES

12 - 3 **£7.00**

4 - 7, 8 - 11, 11 - 13 **£8.00**

NEW

## PUMA FOOTBALL SOCKS 701916

- Core TEAM sock with knitted-in PUMA Cat branding
- Durable construction with contrast colour foot detail
- Recycled Polyester/Nylon/Elastane fabrication

### SIZES

12 - 2 **£5.00**

2.5 - 5.5 **£6.00**

6 - 8.5, 9 - 11 **£7.00**



**PUMA RED-WHITE**  
701916-01



**PUMA ROYAL-WHITE**  
701916-02



**BLACK-WHITE**  
701916-03



**WHITE-BLACK**  
701916-04



**POWER GREEN-WHITE**  
701916-05



**NEW NAVY-WHITE**  
701916-06



**TEAM YELLOW-BLACK**  
701916-07



**TEAM VIOLET-WHITE**  
701916-10



BLACK-WHITE  
701232-03



PUMA RED-WHITE  
701232-01



PUMA ROYAL-WHITE  
701232-02



WHITE-BLACK  
701232-04



TEAM GREEN-WHITE  
701232-05



TEAM YELLOW-BLACK  
701232-07



WHITE-PUMA RED  
701232-12



WHITE-PUMA ROYAL  
701232-13



PUMA RED-BLACK  
701232-14

## POWERCAT SOCKS 701232

- Durable sock with contrast hoop graphic
- Core colours to co-ordinate with the shirts and shorts
- Knitted PUMA Cat on front
- Cotton foot
- Ankle flex Insert for better comfort, elasticated brace for ankle support
- Anatomically placed footbed for the left 'L' and right 'R' foot
- 100% recycled Polyester, Cotton foot

### SIZES

12 - 2 **£6.00**

2.5 - 5.5 **£7.00**

6 - 8.5, 9 - 11 **£8.00**

## TEAM SOCKS 701268

- Knitted PUMA Cat on front
- Cotton instep
- Ankle flex Insert for better comfort
- Material: 70% Polyester, 25% Cotton, 5% Elastane, sock knit

### SIZES

12 - 2 **£5.00**

2.5 - 5.5 **£6.00**

6 - 8.5, 9 - 11 **£6.00**



PUMA RED-WHITE  
701268-01



BLACK-WHITE  
701268-03



WHITE-BLACK  
701268-04



TEAM GREEN-WHITE  
701268-05



PUMA ROYAL-WHITE  
701268-02



NEW NAVY-WHITE  
701268-06



TEAM YELLOW-BLACK  
701268-07



TEAM VIOLET-WHITE  
701268-10



NEW

## STATEMENT GK SHIRT 701917

Gianluigi Buffon in the STATEMENT GK shirt with detail carefully engineered for maximum comfort and enhanced shot stopping.

- Stripe print to inner arm with Silicone forearm print for ball control in all weather conditions
- Polyester circular knit, Jersey shell fabric

### MENS

S – XXXL **£35.00**

### JUNIOR

24/26, 26/28, 30/32 **£26.00**

32/24 **£31.00** (VAT)



EBONY-FLUO GREEN  
701917-46



EBONY-BEETROOT PURPLE  
701917-45

Centralised heat applied Cat branding on front of chest and both sleeves

Bold graphic on chest is designed to make goalkeepers look as imposing as possible

Graphic print is designed to give strikers a subconscious target to improve goalkeepers' ability to make the save

Neck construction improves player comfort and reduces pressure

Printed grip texture on sleeve reduces likelihood of ball slipping when making a catch

STATEMENT GK |





**NEW**

## GK SHIRT 701918

Gianluigi Buffon is wearing the GK shirt with engineered neck construction, designed to improve player comfort and reduce unnecessary pressure.

- PUMA Cat branding, heat transfer application
- Polyester circular knit, double knit, Pique shell fabric. Contrast colour and forearms, slim fit sleeve with Elastane
- dryCELL technology

### MENS

S - XXXL **£26.00**

### JUNIOR

24/26, 26/28, 30/32 **£20.00**

32/34 **£24.00** [VAT]



FLUID BLUE-EBONY  
701918-41



FLUID YELLOW-EBONY  
701918-42



FLUID GREEN-EBONY  
701918-43

Bright colours enhance goalkeepers' visibility on field and increases presence between the posts

Contrast colour sleeve detail also adds durability

Printed grip surface improves contact with the ball to reduce slipping

Engineered neck construction is designed to improve player comfort and reduce unnecessary pressure



GOALKEEPING |







EBONY-WHITE  
701919-37



FLUO BLUE-EBONY  
701919-41



FLUO YELLOW-EBONY  
701919-42



FLUO GREEN-WHITE  
701919-43



NEW

## GK SHORTS 701919

- Durable GK shorts and socks co-ordinate with goalkeeping shirts to complete the outfit with 3 PUMA Cat brandings, heat transfer application
- Polyester double knit Pique shell fabric, Polyester warp knit mesh panel side inserts
- dryCELL technology

MENS

S - XXXL **£18.00**

JUNIOR

24, 26, 28 **£14.00**30 **£17.00** (VAT)

## PUMA FOOTBALL SOCKS - GK 701916

- Socks with knitted-in PUMA Cat branding and contrast foot detail
- Circular knit application, recycled Polyester/Nylon/Elastane fabrication
- Double layered fold over welt, Cotton touch footbed for comfort, ankle brace for support, engineered foot construction

SIZES

12 - 2 **£5.00**2.5 - 5.5 **£6.00**6 - 8.5, 9 - 11 **£7.00**

EBONY-WHITE  
701916-37



FLUO BLUE-EBONY  
701916-41



FLUO YELLOW-EBONY  
701916-42



FLUO GREEN-EBONY  
701916-43

NEW

## GK PANTS WITH PADDING 700314

- Durable, padded goalkeeper pants with foot straps for hard training and match days
- Embroidered PUMA Cat logo on left leg, elasticated waistband with inner drawcord, tight leg, padded on knee and hip

MENS

S - XXL **£25.00**

JUNIOR

24, 26, 28 **£18.00**30 **£22.00** (VAT)

BLACK-TEAM CHARCOAL  
700314-01



## FOUNDATION GK SHORTS 700564

- Embroidered PUMA Cat on left leg
- Abrasion resistant padded area on knee and hip
- One-piece gusset for freedom of movement, drawcord in elasticated waistband

MENS

S - XXXL **£18.00**

JUNIOR

24, 26, 28 **£14.00**30 **£17.00** (VAT)

BLACK  
700564-03



NEW

## BODYWEAR CORE SS TEE ROUND NECK 511605

With its next-to-skin compression, PUMA's new powerCELL is specially designed to work with your body's natural systems to enhance and maximise performance.

- UV protection and a moisture management wicking finish. Unique technology allows ultimate support and comfort
- Ergonomic flat seams provide improved comfort and reduce skin irritation
- powerCELL technology

### MENS

S - XXL £34.00



PUMA RED  
511605-01



TEAM POWER BLUE  
511605-02



WHITE  
511605-04



BLACK  
511605-03





BLACK  
511603-03



PUMA RED  
511603-01



TEAM POWER BLUE  
511603-02



WHITE  
511603-04



NEW

## BODYWEAR CORE LS TEE ROUND NECK 511603

- Next-to-skin compression works with your body's natural systems to enhance and maximise performance
- UV protection and a moisture management wicking finish
- Unique technology allows ultimate support and comfort
- Provides maximum sporting performance whether training or competing
- Ergonomic flat lock seams provide improved comfort and reduce skin irritation
- Suitable for any category
- powerCELL technology

**MENS**  
S - XXL **£38.00**

NEW

## BODYWEAR CORE LS TEE MOCK NECK 511607

- UV protection and a moisture management wicking finish
- Unique technology allows ultimate support and comfort
- Provides maximum sporting performance whether training or competing
- Ergonomic flat seams provide improved comfort and reduce skin irritation
- powerCELL technology

**MENS**  
S - XXL **£40.00**



PUMA RED  
511607-01



TEAM POWER BLUE  
511607-02



BLACK  
511607-03



WHITE  
511607-04



BLAZING YELLOW  
511607-07



POWER GREEN  
511607-05





BLACK  
511604-03



PUMA RED  
511604-01



TEAM POWER BLUE  
511604-02



WHITE  
511604-04



BLACK  
511608-03



NEW

## BODYWEAR CORE SL TEE ROUND NECK 511604

- Next-to-skin compression works with your body's natural systems to enhance and maximise performance
- UV protection and a moisture management wicking finish
- Unique technology allows ultimate support and comfort
- powerCELL technology

### MENS

S - XXL £30.00

## BODYWEAR CORE LONG 511608

- PowerCELL Level 2 - light compression apparel
- Next to skin layers are designed to work with your body's natural systems
- UV protection: highly functional materials meant to protect your skin
- Lycra content provides long lasting elasticity

### MENS

S - XXL £38.00

NEW

## BODYWEAR CORE SHORT 511606

- Next-to-skin compression works with your body's natural systems to enhance and maximise performance
- UV protection and a moisture management wicking finish
- Provides maximum sporting performance whether training or competing
- Ergonomic flat lock seams provide improved comfort and reduce skin irritation
- powerCELL technology

### MENS

S - XXL £28.00



PUMA RED  
511606-01



BLACK  
511606-03



WHITE  
511606-04



POWER GREEN  
511606-05



NEW NAVY  
511606-06



BLAZING YELLOW  
511606-07



TEAM POWER BLUE  
511606-02







**NEW**

## ELITE STORM JACKET 653975

PUMA presents ELITE – a training line for true professionals.

- 3 PUMA Cat brandings, pigment print application
- Polyester/Polyurethane 3-layered knit-Jersey membrane. Outer layer is waterproof, mid layer is breathable and waterproof and the inner layer is windproof
- stormCELL technology

### MENS

S – XXXL **£100.00**



Full frontal waterproof zip opening with garage, side pockets with storm flap openings

Two-piece hood construction with shaped face piece and adjustable toggle, fully seam sealed



BLACK-WHITE  
653975-03

ELITE TRAINING |





BLACK  
653812-03



BLACK  
653813-03



NEW

## ELITE INSULATOR JACKET 653812

- Garment is constructed with an insulating fabric that regulates body temperature. Moisture wicking improves comfort and ventilation
- 3 PUMA Cat brandings, heat transfer application
- 3-piece panel hood construction with shaped face, articulated shaped sleeves, engineered fit, full frontal zip opening
- warmCELL technology

MENS

XS - XXXL £100.00

## ELITE INSULATOR PANTS 653813

- PUMA Cat branding, heat transfer application
- Polyester 2-layered, circular knit-woven bonded, microfibre, double knit, shell material, keep heat placed inner fabric
- Articulated knee construction for comfort, engineered fit, zipped side pockets, zipped leg openings, elasticated waistband with drawcords
- warmCELL technology

MENS

XS - XXXL £90.00

NEW

## ELITE ELEMENTS TRAINING TOP 653814

- Engineered for comfort and warmth
- PUMA Cat branding, heat transfer application
- Polyester 2-layered, interlock fleece shell fabric
- 1/4 zip centre front opening with garage, zipped side pockets
- warmCELL technology

MENS

XS - XXXL £45.00

## ELITE ELEMENTS TRAINING PANTS 653815

- PUMA Cat branding, heat transfer application
- Polyester 2-layered, interlock fleece shell fabric
- Zipped pockets, zipped leg opening
- Articulated knee construction for comfort, engineered fit, elasticated waistband with drawcords
- warmCELL technology

MENS

XS - XXXL £40.00



BLACK  
653814-03



BLACK  
653815-03







BLACK  
512259-01



BLACK  
653808-03

NEW

## OUTDOOR CITY JACKET 512259

- High performance storm proof jacket
- 3 layer membrane construction
- Waterproof, windproof and breathable
- stormCELL technology

MENS

XS - XXXL £65.00

## PRO TRAINING FLEECE 653808

- Engineered for warmth
- 3 PUMA Cat brandings, heat transfer application
- ¾ zip centre front opening with garage, zipped side pockets
- Elasticated cuffs, elasticated hem line
- warmCELL technology

MENS

S - XXXL £35.00

NEW

## PRO COACH JACKET 653810

- 3 PUMA Cat brandings, pigment print applications
- 2-layered circular knit-woven bonding shell fabric, outer layer with water resistant coating, inner layer is brushed fabric windproof
- Concealed hood, full frontal zip opening with garage, articulated sleeves with hand guards, engineered fit
- warmCELL technology

MENS

S - XXXL £85.00

## PRO TRAINING PANT 653824

- PUMA Cat branding, heat transfer application
- Polyester microfibre double knit shell fabric. Mesh gusset inserts, elasticated waistband with drawcords
- Side pockets, zipped leg openings, articulated knee for comfort, engineered fit
- dryCELL technology

MENS

S - XXXL £32.00



BLACK  
653810-03



BLACK  
653824-03

PRO TRAINING |



BLACK-WHITE  
653978-03



BLACK-WHITE  
654038-03



NEW

## PRO STADIUM JACKET 653978

- Nylon Doby shell fabric, water resistant
- Full frontal zip opening with garage, zippered side pockets. Concealed hood, engineered fit, Taffeta sleeve lining
- Polar fleece body lining, padded sleeves, chest and back, grown-on elasticated cuffs, open hem line
- warmCELL technology

MENS

S - XXXL £80.00

## PRO LEISURE SWEAT 654038

- PUMA Cat branding, heat transfer application
- Cotton/Polyester blend, brushed fleece inner shell fabric
- 2x2 rib collar, flat knit, elasticated cuffs, elasticated hem line

MENS

S - XXXL £30.00

NEW

## PRO RAIN JACKET 653968

- 3 PUMA Cat brandings, pigment print application
- Nylon Ripstop textured shell fabric, fully mesh lined
- Full frontal zip opening with garage, zippered side pockets. Elasticated cuffs, elasticated hem line
- windCELL technology

MENS

S - XXXL £45.00



BLACK-WHITE  
653968-03



## PRO WINDBREAKER 653976

- 3 PUMA Cat brandings, pigment print application
- Nylon Ripstop textured shell fabric, fully mesh lined
- ¾ zip centre front opening with garage, zippered side pockets
- Elasticated cuffs, elasticated hem line
- windCELL technology

MENS

S - XXXL £40.00



BLACK-WHITE  
653976-03







BLACK  
653829-03

NEW

## PRO LEISURE PANT 653829

- PUMA Cat branding, heat transfer application
- Elasticated waistband with drawcords, zipped side pockets, zipped leg openings
- Articulated knee bend

**MENS**

S - XXXL **£35.00**



BLACK  
653830-03

## PRO LEISURE SHORT 653830

- PUMA Cat branding, heat transfer application
- Elasticated waistband with drawcords, side pockets

**MENS**

S - XXXL **£20.00**

NEW

## PRO TRAINING SHORT 653739

- PUMA Cat branding, heat transfer application
- Mesh back yoke and gusset inserts
- dryCELL technology

**MENS**

S - XXXL **£20.00**



BLACK  
653739-03



## PRO RAIN PANT 653977

Conceptualised to fit with PUMA's team training lines, covering all your essential needs

- PUMA Cat branding, pigment print application
- Articulated knee construction for comfort. Engineered fit, elasticated waistband with drawcords
- windCELL technology

**MENS**

S - XXXL **£32.00**

BLACK-WHITE  
653977-03



PRO TRAINING |



BLACK-WHITE  
653591-03



PUMA RED-CHILI  
PEPPER-WHITE  
653591-01



PUMA ROYAL-DELFT  
BLUE-WHITE  
653591-02



NEW NAVY-BLUE  
NIGHTS-WHITE  
653591-06

## SPIRIT STADIUM JACKET 653591

- 3 PUMA Cat prints on right chest, upper left and right sleeves
- Spiked insert panels to sleeve and shoulder
- Elasticated cuff binding
- Zipped side pockets
- Concealed hood, padded
- Fully lined with Taffeta
- warmCELL technology

### MENS

S - XXXL **£50.00**

### JUNIOR

24/26, 26/28, 30/32 **£40.00**

32/34 **£48.00** (VAT)

## SPIRIT RAIN JACKET 653593

- 2 PUMA Cat heat transfers on right chest and left sleeve
- Spiked insert panels to sleeve and shoulder
- Tone on tone colour detail
- Fully lined, open cuffs and hem
- Zipped side pockets, concealed hood
- windCELL technology

### MENS

S - XXXL **£30.00**

### JUNIOR

24/26, 26/28, 30/32 **£23.00**

32/34 **£28.00** (VAT)



PUMA RED-CHILI  
PEPPER-WHITE  
653593-01



BLACK-WHITE  
653593-03



NEW NAVY-BLUE  
NIGHTS-WHITE  
653593-67



PUMA ROYAL-DELFT BLUE-WHITE  
653593-02







PUMA ROYAL-DELFT  
BLUE-WHITE  
653638-02



BLACK-WHITE  
653638-03



NEW NAVY-BLUE  
NIGHTS-WHITE  
653638-06

## SPIRIT WET TOP 653638

- PUMA Cat heat transfers on right chest and left sleeve
- Spiked Insert panels to sleeve and shoulder
- Tone on tone colour detail
- Fully lined
- Open cuffs and hem, side pockets
- Zipped shoulder opening
- windCELL technology

### MENS

S - XXXL **£25.00**

### JUNIOR

24/26, 26/28, 30/32 **£18.00**  
32/34 **£22.00** (VAT)

## SPIRIT WOVEN JACKET 653584

- PUMA Cat heat transfers on right chest and left sleeve
- Spiked Insert panels to sleeve and shoulder
- Tone on tone colour detail
- Fully lined
- Elasticated cuffs and hem
- Zipped side pockets

### MENS

S - XXXL **£30.00**

### JUNIOR

24/26, 26/28, 30/32 **£23.00**  
32/34 **£28.00** (VAT)



PUMA RED-CHILI  
PEPPER-WHITE  
653584-01



PUMA ROYAL-DELFT  
BLUE-WHITE  
653584-02



NEW NAVY-BLUE  
NIGHTS-WHITE  
653584-06



BLACK-WHITE  
653584-03

LIMITED STOCK AVAILABLE





## SPIRIT HALF ZIP TRAINING JACKET 653595

- PUMA Cat heat transfers on right chest and left sleeve
- Spiked Insert panels to sleeve and shoulder
- Tone on tone colour detail
- Open cuffs and hem
- Side pockets
- Zipped chest opening
- dryCELL technology

### MENS

S - XXXL **£25.00**

### JUNIOR

24/26, 26/28, 30/32 **£18.00**

32/34 **£22.00** [VAT]

## SPIRIT SWEAT 653590

- PUMA Cat heat transfers on right chest and left sleeve
- Spiked Insert panels to sleeve and shoulder
- Tone on tone colour detail
- Crew neck
- dryCELL technology

### MENS

S - XXXL **£20.00**

### JUNIOR

24/26, 26/28, 30/32 **£15.00**

32/34 **£18.00** [VAT]







PUMA ROYAL-DELFT BLUE-WHITE  
653710-01



PUMA RED-CHILI PEPPER-WHITE  
653710-03



NEW NAVY-BLUE NIGHTS-WHITE  
653710-04

## SPIRIT HOODY 653710

- Embroidered PUMA Cat on right chest and left sleeve
- Spiked Insert panels to sleeve and shoulder
- Tone on tone colour detail
- Elasticated cuffs and hem
- Open side pockets

### MENS

S - XXXL **£25.00**

### JUNIOR

24/26, 26/28, 30/32 **£18.00**

32/34 **£22.00** (VAT)

## SPIRIT TRAINING TEE 653586

- PUMA Cat heat transfer on right chest and left sleeve
- Spiked Insert panels to sleeve and shoulder
- Tone on tone colour detail
- Crew neck
- Mesh back panel for ventilation
- dryCELL technology

### MENS

S - XXXL **£15.00**

### JUNIOR

24/26, 26/28, 30/32 **£11.00**

32/34 **£13.00** (VAT)



PUMA RED-CHILI PEPPER-WHITE  
653586-01



PUMA ROYAL-DELFT BLUE-WHITE  
653586-02



BLACK-WHITE  
653586-03



WHITE/BLACK  
653586-04



POWER GREEN-TEAM GREEN-WHITE  
653586-49



NEW NAVY-BLUE NIGHTS-WHITE  
653586-06





PUMA ROYAL-DELFT BLUE-WHITE  
653588-02



PUMA RED-CHILI  
PEPPER-WHITE  
653588-01



BLACK-WHITE  
653588-03



WHITE-BLACK  
653588-04



NEW NAVY-BLUE  
NIGHTS-WHITE  
653588-06



POWER GREEN-TEAM  
GREEN-WHITE  
653588-49

## SPIRIT POLO 653588

- PUMA Cat heat transfer on right chest and left sleeve
- Spiked Insert panels to sleeve and shoulder
- Tone on tone colour detail
- 3-button placket opening, self-fabric collar
- dryCELL technology

### MENS

S - XXXL **£18.00**

### JUNIOR

24/26, 26/28, 30/32 **£14.00**  
32/34 **£17.00** (VAT)

## SPIRIT WOVEN PANTS 653637

- PUMA Cat heat transfer on left leg
- Side pockets, elasticated waistband, zipped leg opening
- Side Insert panel detailing, spiked panel insert, fully lined

### MENS

S - XXXL **£25.00**

### JUNIOR

24, 26, 28 **£18.00**  
30 **£22.00** (VAT)

## SPIRIT TRAINING PANTS 653594

- PUMA Cat on left leg side pockets
- Elasticated waistband, zipped leg opening
- Side Insert panel detailing

### MENS

S - XXXL **£25.00**

### JUNIOR

24, 26, 28 **£18.00**  
30 **£22.00** (VAT)



NEW NAVY-WHITE  
653637-06



BLACK-WHITE  
653637-03



BLACK-WHITE  
653594-03







NEW NAVY-WHITE  
653592-06



BLACK-WHITE  
653592-03

## SPIRIT WOVEN SHORTS 653592

- PUMA Cat on left leg side pockets
- Elasticated waistband
- Contrast panel, insert to left leg

### MENS

S - XXXL **£12.00**

### JUNIOR

24, 26, 28 **£9.00**

30 **£11.00** (VAT)



NEW NAVY-WHITE  
653709-06



BLACK-WHITE  
653709-03

## SPIRIT TRAINING SHORTS 653709

- PUMA Cat heat transfer on left leg
- Elasticated waistband

### MENS

S - XXXL **£13.00**

### JUNIOR

24, 26, 28 **£10.00**

30 **£12.00** (VAT)





**NEW**

## evoPOWER MEDIUM BAG 072117

A functional bag for all your sporting needs. Constructed with durable fabric for long-lasting wear.

- Padded wraparound carry handles with optional shoulder strap
- Spacious main compartment accessed via two zips with zipped pockets at either end
- Hard case bottom provides a good storage base
- evoPOWER ripple effect graphic on front panel and available in core team colours

**PRICE**  
**£26.00**



BLACK-WHITE  
072117-01



TEAM POWER BLUE-BLACK-WHITE  
072117-02



PUMA RED-BLACK-WHITE  
072117-03







### evoPOWER MEDIUM WHEEL BAG 072114

BLACK-WHITE  
072114-01

- Medium wheel bag with great functional details
- Size: 67 x 31 x 29cm

**PRICE**  
**£55.00**



### evoPOWER XL BAG 072115

BLACK-WHITE  
072115-01

- A stylish, functional XL sports bag
- Size: 83 x 36 x 31cm

**PRICE**  
**£36.00**



### evoPOWER LARGE BAG 072116

BLACK-WHITE  
072116-01

- A stylish and functional large sports bag
- Size: 73 x 34.5 x 30cm

**PRICE**  
**£30.00**



### evoPOWER FOOTBALL BAG 072119

BLACK-WHITE  
072119-01

- A stylish and functional football bag with an additional shoe compartment
- Size: 62 x 37 x 32cm

**PRICE**  
**£35.00**



### evoPOWER FOOTBALL BAG JUNIOR 072120

BLACK-WHITE  
072120-01

- Great functional football bag designed for the needs of a younger football player
- Size: 49 x 30 x 26cm

**PRICE**  
**£30.00**

- Football specific style, designed for the team's needs
- Size: 48 x 31 x 20cm

**PRICE**  
**£45.00**

### TEAM MEDICAL BAG 072374

BLACK-WHITE  
072374-01



- Football specific style, designed for the coach's needs
- Size: 41 x 30 x 14cm

**PRICE**  
**£35.00**

### TEAM MESSENGER BAG 072375

BLACK  
072375-01



- Football specific style, designed for the team's needs
- Size: 40.5 x 131cm

**PRICE**  
**£25.00**

### TEAM BALLSACK (16) 072376

BLACK-WHITE  
072376-01



- Perfect for carrying team items such as training kits and smaller bags
- Size: 128 x 51 x 48cm

**PRICE**  
**£65.00**

### XXL WHEEL BAG 067195

BLACK-WHITE  
067195-01

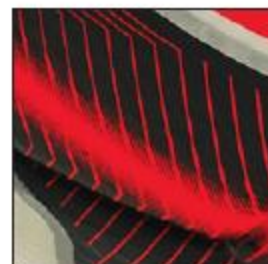


NEW

### evoPOWER 3 TOURNAMENT 082222

- High frequency 32 panel, moulded
- Rubber bladder + PAL (PUMA Air Lock) valve
- Improved distance and aerodynamics, improved rebound and increased power
- Excellent air retention
- controlCELL technology
- FIFA-Inspected

SIZE  
5 £30.00



NEW

### evoPOWER 4 CLUB 082224

- High quality training and match ball
- Constructed from 32 panels with equal surface areas
- Hand stitched panels with multilayered woven backings
- Latex bladder and PAL (PUMA Air Lock) valve for air retention
- IMS-Approved mark guarantees the excellent level of performance

SIZE  
5 £18.00



WHITE-FLUO PEACH-DMBRE  
BLUE 082222-01



WHITE-FLUO PEACH-DMBRE  
BLUE 082224-01



### evoPOWER 6 TRAINER MS 082231

- Suitable for both training and fun games with friends
- The combination of the TPU casing with rubber bladder and machine stitching gives the ball a soft feel
- Excellent shape, bounce and flight characteristics

SIZE  
3, 4, 5 £8.00



WHITE-FLUO PEACH-DMBRE  
BLUE 082231-01



FLUO PEACH-DMBRE BLUE-  
FLUO YELLOW 082231-02



FLUO YELLOW-DMBRE BLUE-  
FLUO PEACH 082231-03



## KING MATCH 082027

- Seams allow for an even flow of air for a perfect aerodynamic performance
- Constructed from 32 panels with equal surface areas for reduced seam stress
- Backing is laminated with a layer of natural Latex for increased water repellency
- Six wing Latex bladder with PAL (PUMA Air Lock)
- FIFA-Approved

### SIZE

5 £35.00



WHITE-FLUO BLUE-BLACK  
082027-16



WHITE-FLUO BLUE-BLACK  
082028-16



## KING 082028

- Seams allow for an even flow of air for a perfect aerodynamic performance
- Constructed from 32 panels with equal surface areas for reduced seam stress
- Backing is laminated with a layer of natural Latex for increased water repellency
- Six wing Latex bladder with PAL (PUMA Air Lock)
- FIFA-Inspected

### SIZE

5 £25.00

## SPIRIT 082031

- Constructed from 32 panels with equal surface areas for reduced seam stress
- Hand stitched panels with multilayered woven backing for enhanced stability and aerodynamics
- Four wing Butyl bladder and PAL (PUMA Air Lock) valve for air retention
- IMS-Approved

### SIZE

5 £16.00



WHITE-FLUO BLUE-BLACK  
082031-16



WHITE-FLUO BLUE-BLACK  
082033-16

## UNIVERSAL MS 082033

- Constructed from 32 panels with equal surface areas for reduced seam stress
- Rubber bladder for great touch and PAL (PUMA Air Lock) valve for air retention
- Machine stitched panels with multilayered woven backing for enhanced stability and aerodynamics

### SIZE

3, 4, 5 £10.00

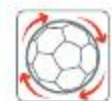


## FIFA QUALITY CONCEPT

Quality is of the highest importance to PUMA. As a result, FIFA regularly controls the quality of our footballs in two categories: FIFA-Approved and FIFA-Inspected. All PUMA footballs are produced by following strict criteria for size, weight, circumference, water uptake and bounce.

### FIFA-APPROVED

Balls that carry this emblem are guaranteed to be premium quality and must pass 7 tests.



Consistent circumference



Permanent roundness



Uniform rebound



Perfect weight



Minimal pressure loss



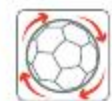
Minimal water absorption



Shape and size retention

### FIFA-INSPECTED

Balls that carry this emblem are guaranteed to be the highest quality and must pass 6 tests.



Consistent circumference



Permanent roundness



Uniform rebound



Perfect weight



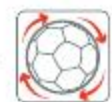
Minimal pressure loss



Minimal water absorption

### IMS

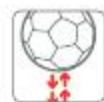
Football bearing this designation have passed the same quality requirements as FIFA-Inspected balls.



Consistent circumference



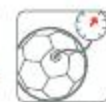
Permanent roundness



Uniform rebound



Perfect weight



Minimal pressure loss



Minimal water absorption



FLUO YELLOW  
653983-42



BEETROOT PURPLE  
653983-25



FLUO ORANGE  
653983-40



FLUO BLUE  
653983-41



FLUO GREEN  
653983-43

NEW

## ESSENTIALS BIB 653983

- Large PUMA Cat brandings front and back, pigment print application
- Relaxed fit for ease of use over training garments

### MENS

S - M, XL **£8.00**



## ESSENTIALS TOWEL 653982

BLACK-WHITE  
653982-03

PUMA RED-WHITE  
653982-01

- Large PUMA Cat branding
- Cotton Terry fabrication
- Contrast colour border design

### SIZE

OSFA **£20.00**



## PUMA PITCH MARKER 050795

FLUO ORANGE-BLACK  
050795-02

- High visibility, stackable
- PUMA No1 logo print
- Pack of 10, in a drawstring mesh bag

### PRICE

**£18.00**

BIBS

## SOCK STOPPERS WIDE 050636

WHITE-BLACK  
050636-01

BLACK-WHITE  
050636-02



- Positions the shin guard where it brings its best protection
- Available in 2 different colours
- Velcro fastener system

### PRICE

O/S Wide **£4.00**

## SOCK STOPPERS THIN 050637

WHITE-BLACK  
050637-01

BLACK-WHITE  
050637-02



- Positions the shin guard where it brings its best protection
- Available in 2 different colours
- Velcro fastener system

### PRICE

O/S Thin **£3.00**

## CAPTAIN'S ARMBANDS 050011

ASSORTED COLOURS  
050011-01



- 12 different colours
- Polyester
- 12 pieces

### PRICE

**£20.00**

## PLASTIC WATER BOTTLE 051041

BLACK-WHITE  
051041-01



- Food safe

### PRICE

0.75l **£3.50**

ACCESSORIES |





**JUNIOR**  
24-26 to 32/34 **£8.00**

**ORDER FORM** | 

# FINISH YOUR KIT OFF

## WITH THE OFFICIAL PUMA FONT AND NUMBERS



### NUMBERS

Back with NOB Star Graphic – 26.5cm deep,  
0.1cm cut out lines – 0.4cm outline

Shorts & Front – 10.5cm deep

### LETTERS

Player name – 17.4cm wide,  
5.5cm deep (Q is 6.8cm deep)

**ASK YOUR PUMA TEAMWEAR  
RETAILER FOR DETAILS**

1 2 3 4 5 6 7 8 9 0



## SIZE CHARTS

### Mens Shirts / Jackets / Bodywear



| S     | M     | L     | XL    | XXL   | XXXL  |
|-------|-------|-------|-------|-------|-------|
| 36/38 | 38/40 | 40/32 | 42/44 | 44/46 | 46/48 |

### Junior Shirts / Jackets



| 24/26 | 26/28 | 30/32 | 32/34 |
|-------|-------|-------|-------|
|-------|-------|-------|-------|

### Mens Shorts / Pants / Bodywear



| S     | M     | L     | XL    | XXL   | XXXL  |
|-------|-------|-------|-------|-------|-------|
| 36/38 | 38/40 | 40/32 | 42/44 | 44/46 | 46/48 |

### Junior Shorts / Pants



| 24 | 26 | 28 | 30 |
|----|----|----|----|
|----|----|----|----|

### Socks



| S      | M         | L       | XL     |
|--------|-----------|---------|--------|
| 12 - 2 | 2.5 - 5.5 | 6 - 8.5 | 9 - 11 |

## PRODUCT TECHNOLOGY

### FIFA-APPROVED

Football that carry this emblem are guaranteed to be premium quality and must pass 7 tests.

### FIFA-INSPECTED

Football that carry this emblem are guaranteed to be the highest quality and must pass 6 tests.

### IMS-APPROVED

Football bearing this designation have passed the same quality requirements as FIFA-Inspected balls.

### P.A.L. PUMA AIR LOCK

Patented new valve, which makes air leakage nearly impossible.

### P.B.T. PERIMETER BALANCE TECHNOLOGY

Special rubber layer on bladder compensates the weight of the valve and guarantees a 100% shot accuracy.

### PUMA ACTV COMPRESSION BODYWEAR

**POWER UP** PUMA ACTV Compression Bodywear is engineered for high performance and endurance sports.

### dryCELL

GET READY FOR DRY  
Moisture management



### stormCELL

BRAVE THE STORM  
Weather protection



### controlCELL

STAY IN CONTROL  
Stability / Ball power



### warmCELL

NICE AND WARM IN HERE  
Thermal insulation



### powerCELL

TURN ON THE POWER  
Compression



### windCELL

KEEP OUT THE WIND  
Windblocker







Head to **PUMAFootballClub.com** to conquer unique challenges  
and get closer than ever to PUMA players.

Sales enquiries: PUMA UK, Grange Road, Batley WF17 6PU

Telephone: 0161 615 4307

Web: [www.puma.com](http://www.puma.com)  PUMAFootball  @PUMAFootball

Please contact your local PUMA Teamwear stockist for more information.

TW2014-15